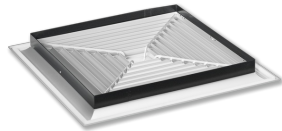


DLQ/600



WITH BUTTERFLY  
DAMPER



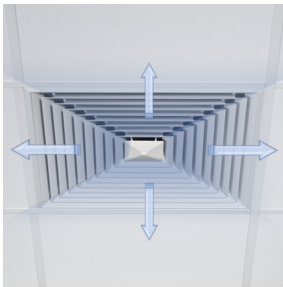
WITH CONNECTING  
FRAME



WITH DAMPER BLADE



WITH PLENUM BOX



HORIZONTAL AIR  
DISCHARGE

## DLQ

### FOR FOUR-WAY HORIZONTAL SUPPLY AIR DISCHARGE, WITH FIXED AIR CONTROL BLADES – SHEET STEEL DIFFUSER FACE

#### Square ceiling diffusers

- Nominal sizes 250, 300, 400, 500, 600, 625
- Volume flow rate range 20 – 700 l/s or 72 – 2520 m<sup>3</sup>/h
- Square diffuser face
- Diffuser face made of sheet steel, powder-coated
- For supply and extract air
- For variable and constant volume flows
- For all types of ceiling systems
- High induction results in a rapid reduction of the temperature difference and airflow velocity

#### Optional equipment and accessories

- Exposed diffuser face available in RAL CLASSIC colours
- Horizontal or vertical duct connection
- Blanking plates for adjusting the discharge direction
- Duct cross bar for installation without plenum box
- Plenum box with cord-operated damper blade and pressure tap

## Application



### Application

- Type DLQ ceiling diffusers are used as supply air or extract air diffusers for comfort zones
- Attractive design element for building owners and architects with demanding aesthetic requirements
- Horizontal four-way supply air discharge for mixed flow ventilation
- High induction results in a rapid reduction of the temperature difference and airflow velocity (supply air variant)
- For variable and constant volume flows
- For supply air to room air temperature differences from -10 to +10 K
- For room heights up to 4 m (lower edge of suspended ceiling)
- For all types of ceiling systems

### Special characteristics

- Horizontal four-way supply air discharge
- Diffuser face made of galvanised sheet steel
- For all types of ceiling systems
- Horizontal or vertical duct connection

### Nominal sizes

- 250, 300, 400, 500, 600, 625

## Description



### Variant

- Square diffuser face

### Connection

- A: Diffuser face only
- AR: Vertical duct connection, with connecting frame
- AG: Vertical duct connection, with blades
- C: Vertical duct connection with butterfly damper
- AK: Horizontal duct connection, with plenum box

#### **Parts and characteristics**

- Square diffuser face with fixed air control blades
- Diffuser front frame
- Simple installation of the diffuser face due to central fixing screw with decorative cap

#### **Accessories**

- Lip seal

#### **Construction features**

- Spigot suitable for circular ducts to EN 1506 or EN 13180

#### **Materials and surfaces**

- Diffuser face, connecting frame and butterfly damper made of sheet steel
- AK: Plenum box and cross bar made of galvanised sheet steel
- X: Plenum box made of plastic and galvanised sheet steel
- Lip seal made of rubber
- Attachments are dip coated RAL 9005, jet black
- Diffuser face powder-coated RAL 9010, pure white
- P1: Powder-coated, RAL CLASSIC colour

#### **Standards and guidelines**

- Sound power level of the air-regenerated noise measured according to EN ISO 5135

#### **Maintenance**

- Maintenance-free as construction and materials are not subject to wear
- Inspection and cleaning to VDI 6022