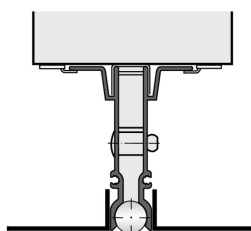




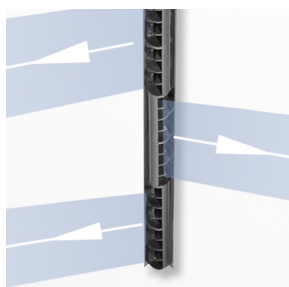
VSD15-A



INSTALLATION IN
CONTINUOUS CEILINGS



INSTALLATION IN
PANELLED CEILINGS



ALTERNATING
HORIZONTAL AIR
DISCHARGE

VSD15

WITH SLIM DIFFUSER FACE

Note: Except UK and SPAIN - VSD slot diffusers will be discontinued on December 31, 2021 and can be replaced with PURELINE slot diffusers.

Slot diffusers with 15 mm diffuser face (nominal width) and adjustable air control elements

- Nominal lengths from 600 to 1500 mm, 1 slot
- Volume flow rate range from 7 to 30 (l/s)/m or 25 to 108 (m³/h)/m
- Diffuser face made of extruded aluminium sections
- For variable and constant volume flows
- Suitable for continuous linear arrangement
- High induction results in a rapid reduction of the temperature difference and airflow velocity
- Individually adjustable air control elements to meet individual local requirements

Optional equipment and accessories

- Exposed diffuser face available in RAL CLASSIC colours
- Diffuser face with extended border

- Damper blade for volume flow rate balancing, can be adjusted through the diffuser face
- Plenum box with lining
- End angle, end seal
- White air control elements

Application



Application

- Type VSD15 slot diffusers are used as supply air or extract air devices in comfort zones
- Air discharge is one-way or alternating horizontal, or alternating angled; turbulent flow (mixed flow ventilation)
- High induction results in a rapid reduction of the temperature difference and airflow velocity (supply air variant)
- For variable and constant volume flows
- For supply air to room air temperature differences from -10 to $+10$ K
- For room heights up to 4 m (lower edge of suspended ceiling)
- For suspended ceilings; suitable for restricted ceiling voids due to the low overall height of the plenum box
- Ideal for suspended panelled ceilings with standard 16 mm gaps
- Suitable for continuous linear arrangement

Special characteristics

- Individually adjustable air control elements to meet individual local requirements
- High induction results in a rapid reduction of the temperature difference and airflow velocity
- Ideal for suspended panelled ceilings with standard 16 mm gaps
- Suitable for continuous linear arrangement

Nominal sizes

- L_N : 600, 700, 800, 900, 1000, 1100, 1200, 1300, 1400, 1500 mm
- Diffuser face available in intermediate sizes from 300 to 2000 mm, in increments of 1 mm

Description



Variants

- VSD15-F: Diffuser face only
- VSD15-...: Diffuser face without extended border
- VSD15-...-Z0: Diffuser face with extended border
- VSD15-...: Black air control elements
- VSD15-.../WW: White air control elements

Connection

- A: Plenum box
- D: Plenum box with lining

Parts and characteristics

- Diffuser face with individually adjustable air control elements
- Plenum box for horizontal duct connection
- Connecting pins and alignment plates to connect and align slot diffusers for a continuous linear arrangement

Attachments

- M: Damper blade for volume flow rate balancing
- A9: End seal (only for diffuser face without extended border)
- CA: End angle (only for diffuser face with extended border Z0)

Accessories

- Lip seal

Useful additions

- ED: Two end seals (only for diffuser face without extended border)
- EW: Two end angles (only for diffuser face with extended border Z0)
- To be ordered separately for continuous linear runs

Construction features

- Spigot suitable for circular ducts to EN 1506 or EN 13180
- Spigot with groove for lip seal (if accessory lip seal has been ordered)

Materials and surfaces

- Diffuser face made from extruded aluminium sections
- Air control elements made of plastic, UL 94, V-0, flame retardant
- Plenum box made of galvanised sheet steel
- Lip seal made of rubber
- Lining is mineral wool
- Diffuser face without extended border is powder-coated RAL 9005, jet black
- Diffuser face with extended border is anodised, E6-C-0, natural colour
- P1: Powder-coated, RAL CLASSIC colour
- Air control elements similar to RAL 9005, black
- WW: Air control elements similar to RAL 9010, white

Mineral wool

- To EN 13501, fire rating class A1, non-combustible
- RAL quality mark RAL-GZ 388
- Biosoluble and hence hygienically safe according to the German TRGS 905 (Technical Rules for Hazardous Substances) and EU directive 97/69/EC
- Faced with glass fibre fabric as a protection against abrasion through airflow velocities of up to 20 m/s
- Inert to fungal and bacterial growth

Standards and guidelines

- Sound power level of the air-regenerated noise measured according to EN ISO 5135

Maintenance

- Maintenance-free as construction and materials are not subject to wear
- Inspection and cleaning to VDI 6022