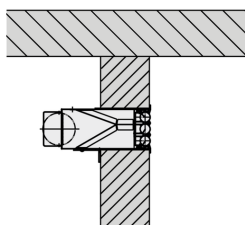


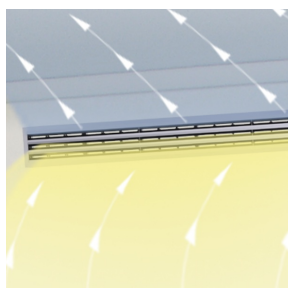


**VSD35-3-AZ**

Black air control elements



**WALL INSTALLATION**



**ANGLED ONE-WAY AIR  
DISCHARGE AND  
EXTRACT AIR**

## VSD35-3-AZ

### VENTILATION AND EXTRACT VENTILATION COMBINED IN ONE CASING

Slot diffusers with 35 mm nominal width, used as supply and extract air combination

- Nominal length from 600 to 1200 mm, 3 slots
- Volume flow rate range 8 – 40 l/s or 30 – 144 m<sup>3</sup>/h
- Diffuser face made of extruded aluminium sections
- For variable and constant volume flows
- High induction results in a rapid reduction of the temperature difference and airflow velocity
- Individually adjustable air control elements to meet individual local requirements

#### Optional equipment and accessories

- Exposed diffuser face available in RAL CLASSIC colours
- Damper blade for volume flow rate balancing, can be adjusted through the diffuser face
- Acoustic lining that ensures very good transmission loss
- Screw fixing

- End angles, fixing brackets

## Application



### Application

- Type VSD35-3-AZ slot diffusers are used as supply and extract air combinations in comfort zones
- Angled one-way air discharge for turbulent flow (mixed flow ventilation)
- High induction results in a rapid reduction of the temperature difference and airflow velocity
- For variable and constant volume flows
- For supply air to room air temperature differences from -10 to +10 K
- For room heights up to 4 m (lower edge of suspended ceiling)
- For horizontal installation into walls and bulkheads

### Special characteristics

- Individually adjustable air control elements to meet individual local requirements
- High induction results in a rapid reduction of the temperature difference and airflow velocity
- Diffuser face has been optimised for maximum volume flow rate at low sound power levels
- Suitable for continuous linear arrangement

### Nominal sizes

- L<sub>N</sub>: 600, 750, 900, 1050, 1200 mm

## Description



### Variants

- VSD35-3-AZ-...: supply and extract air combination without acoustic lining (cross talk reduction)
- VSD35-3-AZ-...-ZT: Supply and extract air combination with acoustic lining (cross talk reduction)
- VSD35-3-AZ-...: Black air control elements
- VSD35-3-AZ-.../WW: White air control elements

Plenum box and diffuser face fixing

- AK: Plenum box with rigid fixing
- AS: Plenum box with screw fixing

### Parts and characteristics

- Diffuser face with individually adjustable air control elements
- Plenum box for horizontal duct connection
- Screw fixing (facilitates installing the diffuser face) or screw fixing

### Attachments

- Damper blade for volume flow rate balancing
- End angle

### Accessories

- Lip seal
- Fixing brackets

### Construction features

- Spigot suitable for circular ducts to EN 1506 or EN 13180
- Spigot with groove for lip seal (if accessory lip seal has been ordered)

## Materials and surfaces

- Diffuser face made from extruded aluminium sections
- Air control elements made of plastic, UL 94, V-0, flame retardant
- Plenum box and fixing brackets made of galvanised sheet steel
- End angle made of aluminium
- Lip seal made of rubber
- Acoustic lining of the cross-talk attenuator is mineral wool
- Diffuser face with anodised finish, E6-C-0, natural colour
- P1: Powder-coated, RAL CLASSIC colour
- Air control elements similar to RAL 9005, black
- WW: Air control elements similar to RAL 9010, white

### Mineral wool

- To EN 13501, fire rating class A1, non-combustible
- RAL quality mark RAL-GZ 388
- Biosoluble and hence hygienically safe according to the German TRGS 905 (Technical Rules for Hazardous Substances) and EU directive 97/69/EC
- Faced with glass fibre fabric as a protection against abrasion through airflow velocities of up to 20 m/s
- Inert to fungal and bacterial growth

## Standards and guidelines

- Sound power level of the air-regenerated noise measured according to EN ISO 5135

## Maintenance

- Maintenance-free as construction and materials are not subject to wear
- Inspection and cleaning to VDI 6022